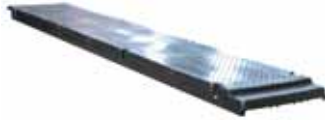


Rail Products

Viscount Rotational Mouldings continue to develop specialised mouldings to suit the growing demands of the challenging Australian Railway market. The single and double railway base offer strength with lightweight and low cost compared to conventional products. Moulded from a single wall, hollow cored construction these mouldings are built to last in the toughest Australian environments. The multi compartment cable tray is designed to be laid end to end with overlapping joints and has a removable lid for easy cable installation and access. Both 2 and 3 section trays are available and provide a cost effective separation of the services.



UG2072 - Railway Cable Tray

UG2071 - Railway Cable Tray Lid

UG2077- Railway Cable Tray

UG2076 - Railway Cable Tray Lid

Code	Product	A	B	C
UG2072	Railway Cable Tray	2068	450	338
UG2071	Railway Cable Tray Lid	2070	450	70
UG2076	Railway Cable Tray Lid	1150	430	75
UG2077	Railway Cable Tray	1150	540	350

All measurements in millimetres



UG2073 - Railway Single Signal Base

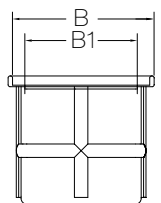
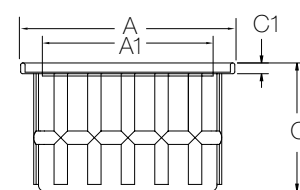
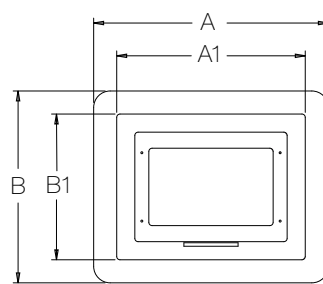
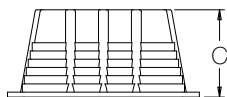
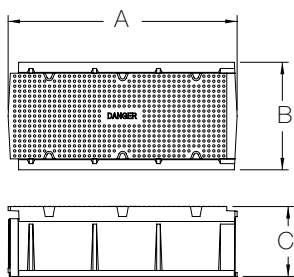
UG2074 - Railway Double Signal Base

UG2090 - Railway Platform Pit

Code	Product	A	A1	B	B1	C
UG2073	Railway Single Signal Base	1425	1245	1165	995	530
UG2074	Railway Double Signal Base	2440	2165	1120	850	740

Code	Product	A	A1	B	B1	C	C1
UG2090	Railway Platform Pit	1130	950	830	650	700	65

All measurements in millimetres



Rail Products

The large 1000mm diameter railway pits now are available with both standard and lockable galvanized metal lids. The simple quick action rotating lock mechanism provides security of the lid and protects the contents of the pit from unauthorized entry.

A recent addition to the VRM range of infrastructure products is the new Rail Pit 1. This robust polyethylene pit has been designed to provide security for cables and components in public accessible locations. The hot dipped galvanized lockable lids are secured to the ends of the pit by heavy duty hinges. The anti-slip reinforced lids provide strong closure with the option of being lockable. A strong rib profile has been designed to provide lateral strength necessary to resist the compressive force of backfilling during installation and service.



UG2075 - Railway Pit 1000mm

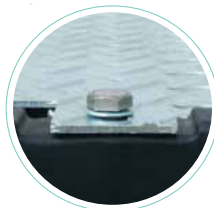
UG2070 - Lid
UG2104 - Lockable Lid

UG2550 - Square to Round Pit

UG2350 - Lockable Lid

Code	Product	A	A1	A2	B	B1	B2	C	C1
UG2070	Lid 1000mm	1050	-	-	1038	-	-	50	-
UG2104	Lockable Lid 1000mm	1050	-	-	1038	-	-	50	-
UG2075	Railway Pit 1000mm	1140	1080	-	-	1040	-	1215	-
UG2550	Square to Round Pit	700	652	593	550	502	443	1180	1123
UG2350	Lockable Lid	650	-	-	495	-	-	115	50

All measurements in millimetres



UG2078 - Railway Type 1 Pit

Lid details

Code	Product	A	B	C
UG2078	Railway Type 1 Pit & Lid	1220	820	960

All measurements in millimetres

